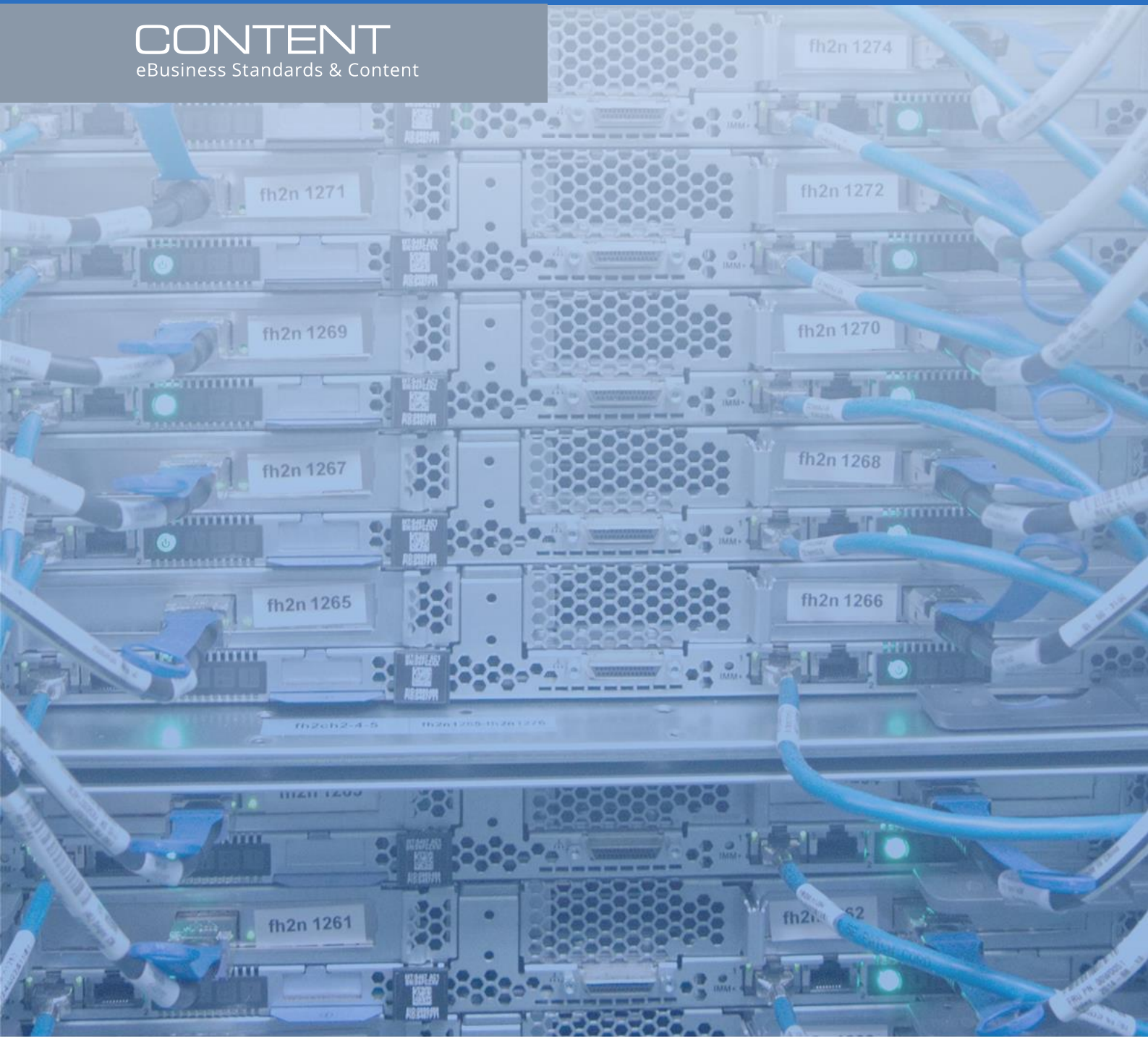


Open Applications Group Integration Specifications  
**ConnectSpec**  
**(previously OAGIS)**

**CONTENT**  
eBusiness Standards & Content





GEFEG mbH  
Storkower Straße 207  
10369 Berlin  
Germany

+49 - 30 - 979914-0  
[info@gefeg.com](mailto:info@gefeg.com)  
[www.gefeg.com](http://www.gefeg.com)  
[GEFEG at LinkedIn](#)

Status: July 2023

## Contents

Contents.....	3
ConnectSpec (previously OAGIS).....	4
Why was ConnectSpec (previously OAGIS) developed?.....	4
GEFEG.FX supports ConnectSpec BODs (previously OAGIS BODs).....	5
ConnectSpec BODs (previously OAGIS BODs) in GEFEG.FX .....	5
Customizing OAGIS BODs for your company's needs .....	5
Integration, cross-referencing and mapping:.....	5
ConnectSpec Module (previously OAGIS Module) .....	7
Powerful support for EDI tasks with GEFEG.FX Software .....	7
Are you interested in using the ConnectSpec Module?.....	8

## ConnectSpec (previously OAGIS)

ConnectSpec (Previously OAGIS) - the Open Applications Group Integration Specifications - is a standard developed by the Open Applications Group, Inc. (OAGI) to integrate supplementary business applications with companies' existing software, and to transmit data between companies faster and more economically.

Open Applications Group's purpose is to define and promote a unifying standard for eBusiness and Application Software interoperability that reduces customer cost and time to deploy solutions (see <http://www.oagi.org>). In order to fulfil this mission, the Open Applications Group not only takes on responsibility for the XML dialect ConnectSpec (Previously OAGIS), but also offers companies a forum for the exchange of information in which topics such as integration, best practices, user demands and the propagation of ConnectSpec (Previously OAGIS) can be discussed.

### Why was ConnectSpec (previously OAGIS) developed?

The need for such interoperability was recognized in the mid-1990s by leading American software manufacturers, who joined together in a consortium to create a solution. The non-profit Open Applications Group, Inc. (OAGI) was founded in 1995 by ERP software specialists including American Software, CODA Financials, Dun & Bradstreet, Marcam, SAP, PeopleSoft and Software 2000.

The approach was to apply the "plug & play" principle to software integration. This basic theoretical concept was published as a white paper, and its implementation in a proof-of-concept demonstration was presented in 1995.

The "Open Applications Group's Integration Specification", published in 1996, was the first specification to implement the concept. In 1999, XML was integrated in the specification as a meta-data language. The business object documents, or BODs, which represent the basic transactions are drafted based on XML. BODs include Add PO, Cancel PO, Get Pricelist, Load Receivables, and many more.

## GEFEG.FX supports ConnectSpec BODs (previously OAGIS BODs)

GEFEG.FX can be used for the reference and documentation of implementation guidelines for ConnectSpec (Previously OAGIS) BODs (Business Object Document). This has been achieved by an import process which reads the original ConnectSpec (Previously OAGIS) Schema files.

## ConnectSpec BODs (previously OAGIS BODs) in GEFEG.FX

All notes and descriptions provided by OAGIS are available within the GEFEG.FX schema IDE as well as enumeration values or codes.

## Customizing OAGIS BODs for your company's needs

In addition, a user can define own note categories and add notes to each occurrence of elements as necessary for the implementation.

The user can add notes as necessary to further describe the use of an element in question in his particular business process. This technique, known from traditional EDI implementation guidelines, helps to enhance the business partner's understanding of how a BOD is to be used in a certain business chain.

Elements which are not used can be easily marked as such.

## Integration, cross-referencing and mapping:

ConnectSpec (previously OAGIS) ↔ B2B Standards

GEFEG.FX provides means for the integration of XML schemas in existing descriptive systems like data models or EDI guidelines.

The specific benefit of this feature for the user is the easy migration respectively implementation of ConnectSpec (Previously OAGIS) BODs. Descriptions which have already been specified (like status, format, descriptive texts, codes etc.) in an implementation guide based on another XML dialect or a classic B2B standard are available for re-use in an ConnectSpec (Previously OAGIS) BOD. Thus the business content of existing data models,

guides or the like will be transferred to ConnectSpec (previously OAGIS) BODs easily and consistently.

Example 1:

Mapping of an existing data model or another XML Schema to ConnectSpec (previously OAGIS) BOD

Example 2:

Mapping of a traditional B2B standard data to ConnectSpec (previously OAGIS) BOD

A documentation will contain information from the schema itself and from linked objects like the path to the corresponding element in the other object, additional notes etc. In addition, information from mapped (linked) objects can also be notified, like for example the corresponding data element of the EDIFACT message, additional notes etc.

## ConnectSpec Module (previously OAGIS Module)

ConnectSpec (previously OAGIS) is available as a module for GEFEG.FX.

The module contains the following versions:

- OAGIS 10.4
- OAGIS 10.3
- OAGIS 10.2.1
- OAGIS 10.2
- OAGIS 10.1
- OAGIS 10.0
- OAGIS 9.6.1
- OAGIS 9.5
- OAGIS 9.4.1
- OAGIS 9.3
- OAGIS 9.2
- OAGIS 9.1
- OAGIS 9.0
- OAGIS 8.0

## Powerful support for EDI tasks with GEFEG.FX Software

EDI managers and teams will profit from GEFEG.FX

- as an information source for ConnectSpec (previously OAGIS)
- in testing messages
- in developing and documenting mapping from ConnectSpec (previously OAGIS) to other formats and vice versa
- by visualizing ConnectSpec (previously OAGIS) or application guidelines in HTML projects
- in exporting EDI guides to XML for conversion to XML structures such as DTDs and XSDs
- by providing data for translators

## Are you interested in using the ConnectSpec Module?

- Are you interested in using ConnectSpec Module in your company?
- Would you like to learn how you can use ConnectSpec Module in GEFEG.FX?

Contact us by [e-mail](#) or via [LinkedIn](#) - we will be pleased to get back and promptly assist you.